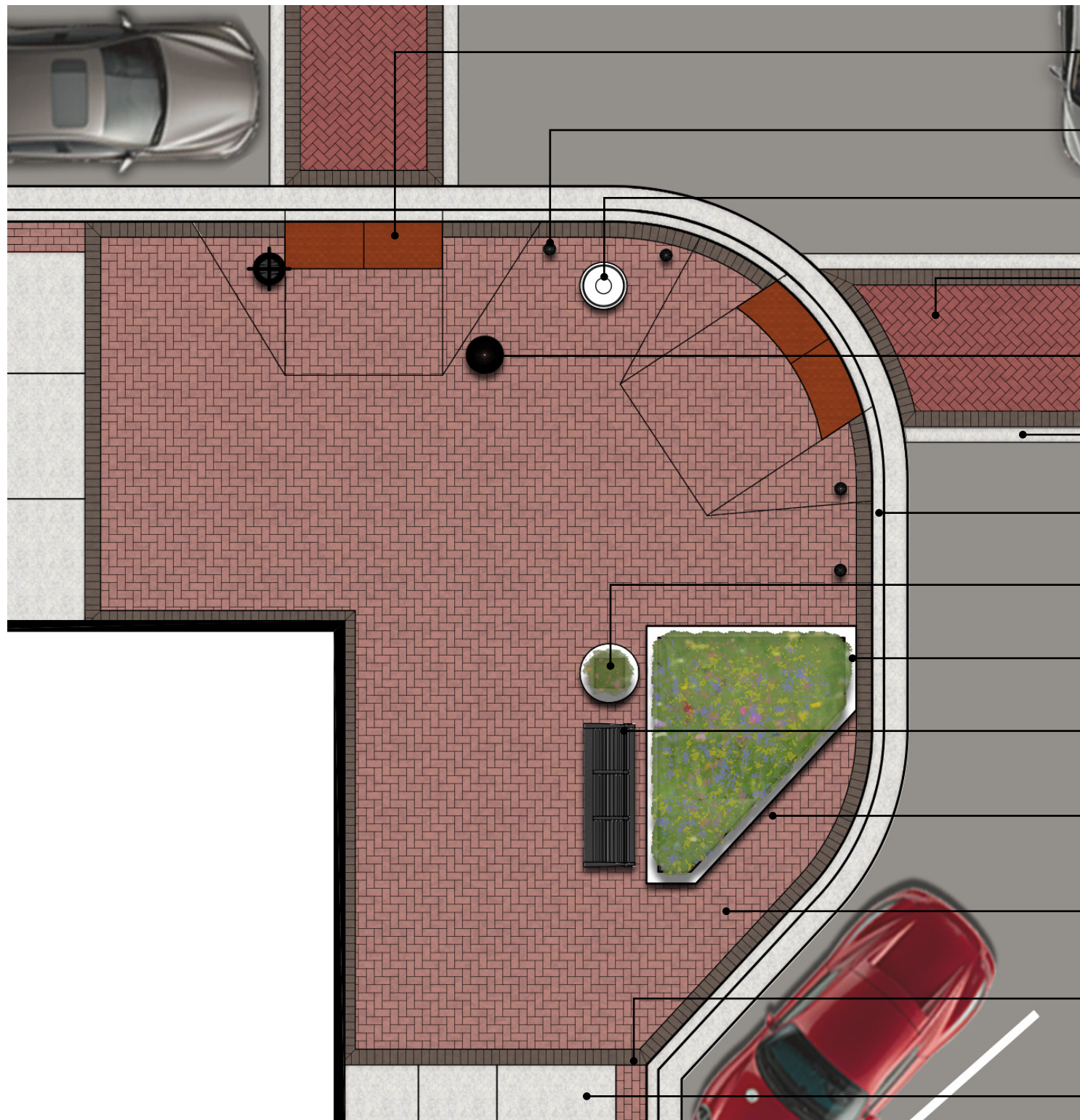


PAVER PATTERN ENLARGEMENT



- ADA detectable warning panels (cast iron)
- Bollard
- Trash receptacle
- Crosswalks, Red, Modified Herringbone
- Traffic light
- Concrete curb band
- Concrete curb
- Movable planter
- Planter curb
- Bench
- Soldier Course, Dark Accent, Single Course
- Sidewalks, Full Range, Herringbone
- Line up pavers where soldier course meets paver banding
- Concrete sidewalk



Paver - Sidewalks
Pine Hall Beveled Edge, English Edge
Full Range



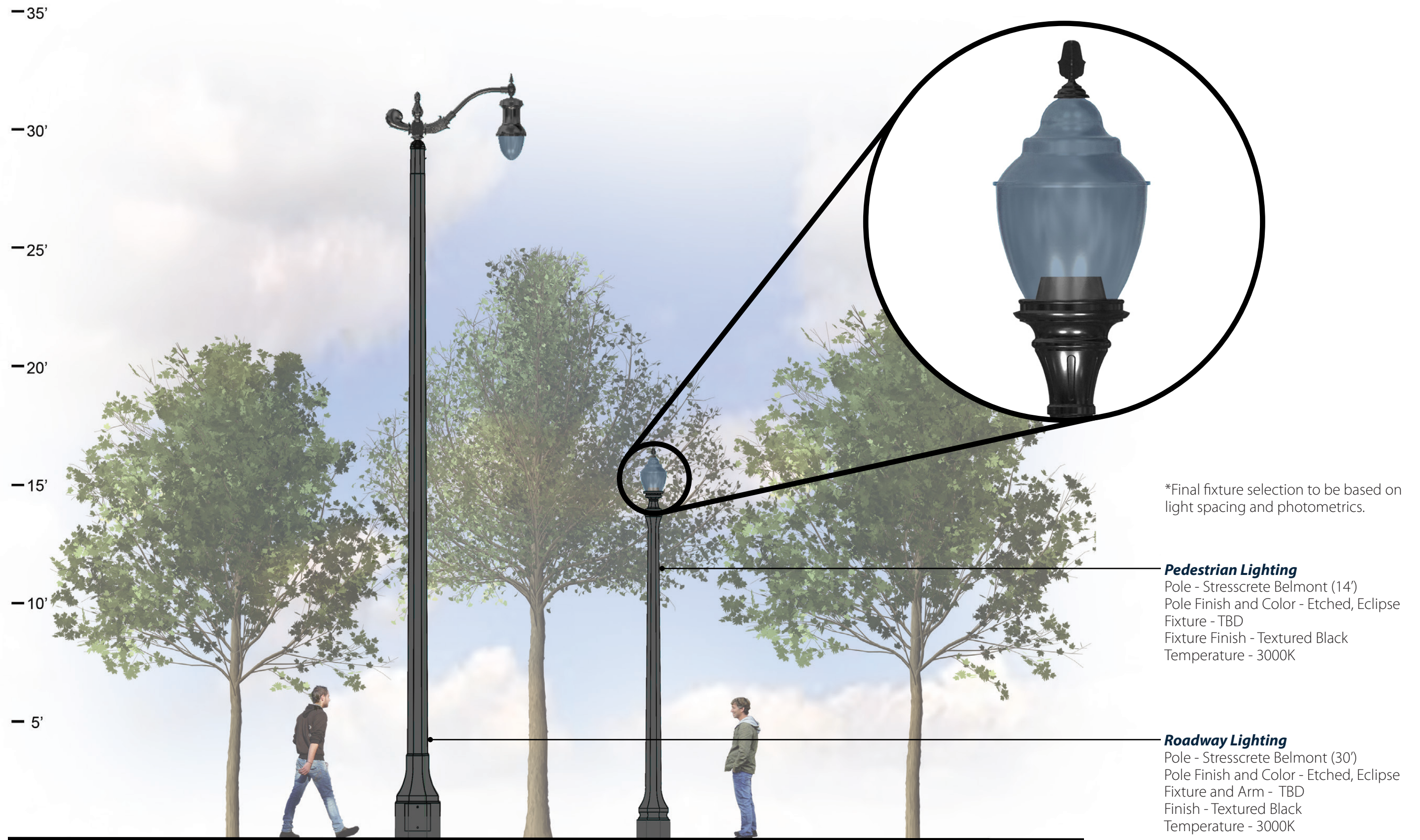
Paver - Crosswalks
Pine Hall Beveled Edge, English Edge
Red



Paver - Soldier Course
Pine Hall Beveled Edge, English Edge
Dark Accent

Paver Pattern / Crosswalks

STREETSCAPE ELEMENTS



Streetscape Lighting

| Botanical Name | Common Name | Size |
|--|-----------------------------------|---------------|
| Shade Trees | | |
| Acer miyabe 'Morton' | State Street Miyabe Maple | 2 1/2" C min. |
| Acer x freemanii 'Autumn Blaze' | Autumn Blaze Freeman Maple | 2 1/2" C min. |
| Acer x freemanii 'Marmo' | Marmo Freeman Maple | 2 1/2" C min. |
| Celtis occidentalis 'Chicagoland' | Chicagoland Hackberry | 2 1/2" C min. |
| Ginkgo biloba 'Princeton Sentry' | Princeton Sentry Ginkgo | 2 1/2" C min. |
| Gleditsia triacanthos var. inermis 'Skyline' | Skyline Thornless Honeylocust | 2 1/2" C min. |
| Gymnocladus dioicis 'Prairie Titan (male)' | Prairie Titan Kentucky Coffeetree | 2 1/2" C min. |
| Platanus x acerifolia 'Morton Circle' | Exclamation! London Planetree | 2 1/2" C min. |
| Quercus bicolor | Swamp White Oak | 2 1/2" C min. |
| Quercus macrocarpa | Bur Oak | 2 1/2" C min. |
| Quercus muehlenbergii | Chinkapin Oak | 2 1/2" C min. |
| Ulmus 'Morton Glossy' | Triumph Elm | 2 1/2" C min. |
| Ulmus americana 'Princeton' | Princeton American Elm | 2 1/2" C min. |
| Ulmus japonica x wilsoniana 'Morton' | Accolade™ Elm | 2 1/2" C min. |

| Botanical Name | Common Name | Size |
|---------------------------------------|------------------------------------|--------|
| Deciduous Shrubs | | |
| Aronia melanocarpa 'Morton' | Iroquois Beauty™ Black Chokeberry* | 24" HT |
| Diervilla 'G2X88544' | Kodiak Orange Bush Honeysuckle | 24" HT |
| Hydrangea arbor. 'Annabelle' | Annabelle Smooth Hydrangea | 24" HT |
| Hydrangea arborescens 'NCHA1" | Invincebelle Spirit Hydrangea | 24" HT |
| Physocarpus opulifolius 'Donna May' | Little Devil Eastern Ninebark | 24" HT |
| Rhus aromatica 'Gro-Low' | Gro-Low Fragrant Sumac | 24" HT |
| Ribes alpinum | Alpine Currant | 24" HT |
| Spiraea betulifolia 'Tor' | Tor Birchleaf Spirea | 24" HT |
| Symphoricarpos x chenaultii 'Hancock' | Hancock Chenault Coralberry | 24" HT |
| Syringa x 'Penda' | Bloomerang Purple Lilac | 24" HT |

| Botanical Name | Common Name | Size |
|--------------------------------------|--------------------------------|--------|
| Evergreen Shrubs | | |
| Juniperus chinensis 'Kallay Compact' | Kallay Compact Chinese Juniper | 24" HT |
| Pinus mugo 'Valley Cushion' | Valley Cushion Mugo Pine | 24" HT |

| Botanical Name | Common Name | Size |
|--|---|-------|
| Perennials | | |
| Allium 'Millennium' | Millennium Ornamental Chive | 1 GAL |
| Allium tanguticum 'Summer Beauty' | Summer Beauty Ornamental Chive | 1 GAL |
| Allium thumbergii 'Ozawa' | Ozawa Ornamental Onion | 1 GAL |
| Amsonia hubrichtii 'Halfway to Arkansas' | 'Halfway to Arkansas' Narrow Leaf Blue Star | 1 GAL |
| Bergenia cordifolia 'Winterglod' | Winterglow Bergenia | 1 GAL |
| Calamagrostis brachytricha " | Korean Feather Reed Grass | 1 GAL |
| Calamagrostis x acutiflora 'Karl Foerster' | Karl Foerster Feather Reed Grass | 1 GAL |
| Calamintha nepeta | Calamint | 1 GAL |
| Echinacea purpurea 'Magnus' | Magnus Purple Coneflower | 1 GAL |
| Hemerocallis 'Going Bananas' | Going Bananas Daylily | 1 GAL |
| Hemerocallis 'Rosy Returns' | Rosy Returns Daylily | 1 GAL |
| Heuchera richardsonii | Prairie Alumroot | 1 GAL |
| Nepeta x faassenii 'Early Bird' | Early Bird Catmint | 1 GAL |
| Nepeta x faassenii 'Walker's Low' | Walker's Low Catmint | 1 GAL |
| Panicum virgatum 'Rostrahlbusch' | Red Switch Grass | 1 GAL |
| Panicum virgatum 'Shenandoah' | Shenandoah Switch Grass | 1 GAL |
| Perovskia atriplicifolia 'Little Spire' | Little Spire Russian Sage | 1 GAL |
| Rudbeckia speciosa 'Viette's Little Suzy' | Viette's Little Suzy Black-eyed Susan | 1 GAL |
| Schizachyrium scoparium 'Carousel' | Carousel Little Bluestem | 1 GAL |
| Sesleria autumnalis | Autumn Moor Grass | 1 GAL |
| Sporobolus heterolepis | Prairie Dropseed | 1 GAL |
| Veronica 'Eveline' | Eveline Speedwell | 1 GAL |

Preliminary Plant List

Plant materials that are tolerant of urban conditions, salt tolerant, and drought resistant should be selected for the streetscape. This preliminary plant list meet these requirements.

Streetscape Planting



Planter Curb



Decorative Planters



Planter Curb



Decorative Planters

Tournefol Aquarian Collection



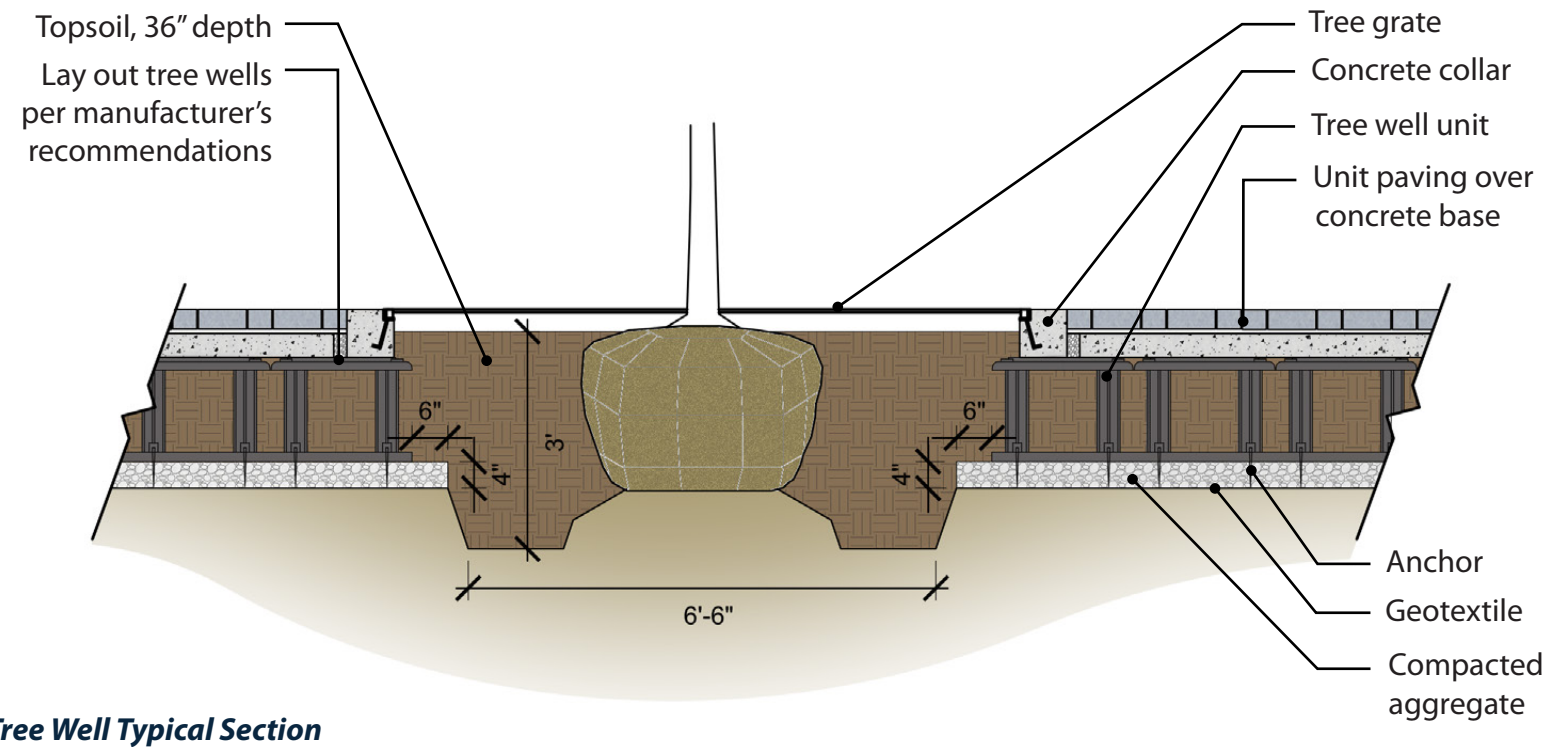
Rectangular Tree Grate
Neenah Tree Grate, Cast Iron 8823



Tree Well



Tree Well Construction



Tree Well Typical Section

Tree Well / Tree Grate System



Trash Receptacles

Landscape Forms, Scarborough - side opening, color black



Benches

Victor Stanley backed bench, RB-28, can be custom to include middle arm rest, color black



Benches

Victor Stanley backless bench, RB-12, color black



Bike Racks

Belson Outdoor single loop, color black



Ornamental Fencing

4' high black ornamental fence, color black



Bollards

Spruce & Gander, San Francisco, color black

Street Furnishings



Pavement Markers

APPENDIX 1

Acknowledgements

City of La Porte

Mayor Tom Dermody
Laura Cutler
Courtney Parthun
Craig Phillips
Nick Minich
Sarah Nimetz
David Heinold
Tim Werner
Jeff Bachelor
Jerry Jackson
Lori Larson
Brett Binversie

La Porte Parks and Recreation

Mark Schreiber

La Porte Redevelopment Commission

Brian Chalik

Business Improvement District

Thaddeus Cutler
Clinton Worthington
James Kaminski

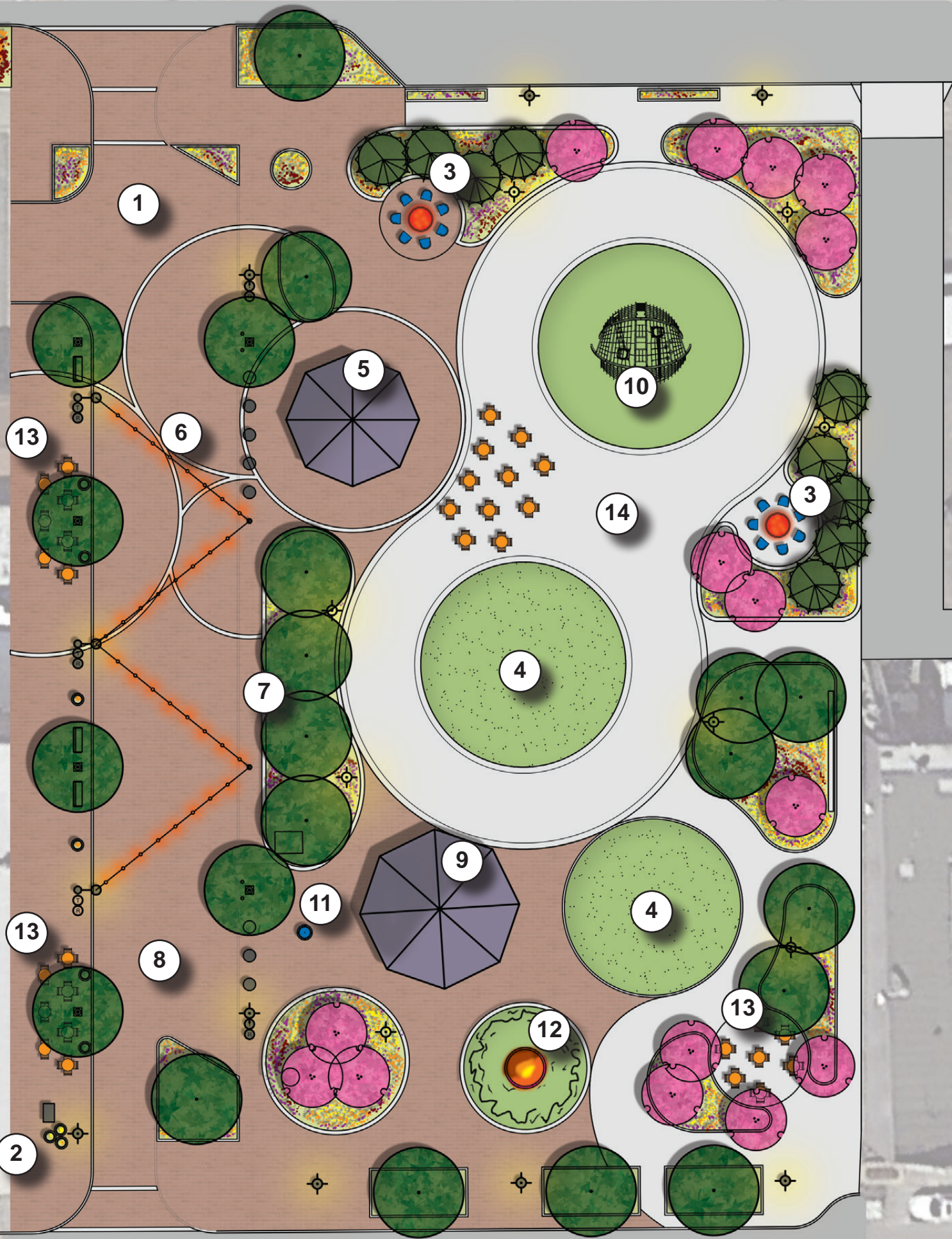
Indiana Department of Transportation

Tim Werner
Mike

Expectations

- Build on the Heart of La Porte plan
- Urban link between downtown, NewPorte Landing, and Clear Lake
- Community gathering space
- Flexible space for special events
- Enhanced streetscape with special lighting, pavement, landscape, and other streetscape improvements
- Traffic direction and parking

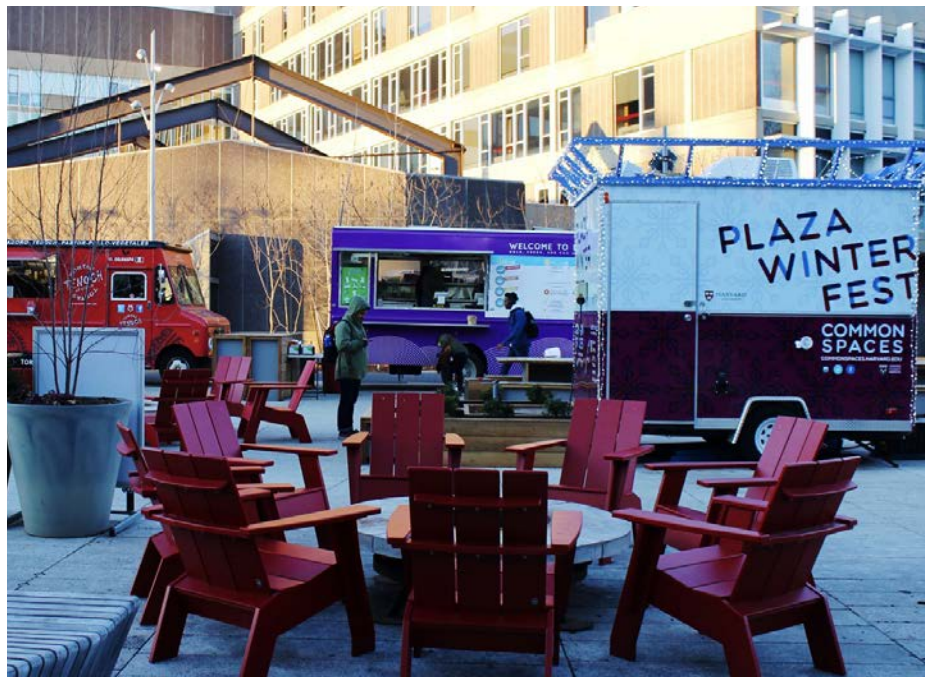
Monroe Landing Plaza



- ### LEGEND
- 1 One-way street with angled parking, benches, lights, trees, bollards, etc.
 - 2 Movable planters
 - 3 Fire pit
 - 4 Synthtic turf lawn
 - 5 Building
 - 6 String lights
 - 7 Raised planters
 - 8 Special paving
 - 9 Event building
 - 10 Play structure
 - 11 Granite water ball
 - 12 Sculpture
 - 13 Outdoor dining
 - 14 Concrete sidewalk / Ice rink



Comparables



Comparables



Comparables



Comparables



Planning and Landscape Architecture

22 E. Chicago Avenue, Suite 200A
Naperville, IL 60540

T 630.961.1787
www.hitchcockdesigngroup.com